



SYSTIMAX 360™ Product Guide



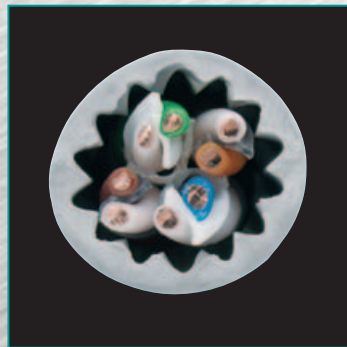
SYSTIMAX 360™ is redefining performance from every angle.

The next-generation infrastructure network, fueled by SYSTIMAX 360, is truly a network without limits. Engineered with customers in mind, SYSTIMAX 360 products deliver the design, speed and intelligence you need to take your business further.

Sleek, intuitive design offers superb ergonomics and an elegant appearance. Scorching speed takes on any current or emerging application with superior, consistent performance. Intelligence options provide insight deep into your network, offering you the vision, knowledge and control of your network infrastructure.

Through the innovations of SYSTIMAX 360, CommScope® empowers you with unprecedented performance, usability and intelligence. We make it possible for enterprise executives and IT management across the globe to seize future opportunities and enhance profitability by powering your network for mission-critical, high-bandwidth and emerging applications.

All delivered in a new green packaging format for CommScope that continues our commitment to environmental stewardship.



Engineering meets elegance.

Speed meets intelligence.

Copper meets fiber.

The future of networks has arrived.

Contents

SYSTIMAX 360 GigaSPEED® X10D 91 Series U/UTP Cables	4
SYSTIMAX 360 GigaSPEED® XL 1100GS3 Panels	8
SYSTIMAX 360 GigaSPEED® XL PATCHMAX® GS3 and GigaSPEED® X10D PATCHMAX® GS5 Panels	9
SYSTIMAX 360 Modular Panel	10
SYSTIMAX 360 GigaSPEED® X10D MGS600 Information Outlet	11
SYSTIMAX 360 GigaSPEED® X10D GS10E Patch Cord	12
SYSTIMAX 360 G2 1U and 2U Shelves	13
SYSTIMAX 360 G2 4U Shelf	15
SYSTIMAX 360 G2 Fiber Cartridges and Bezels	16
SYSTIMAX 360 iPatch® G2 High Density Fiber Shelf	18
SYSTIMAX 360 iPatch® Panel Manager	19

SYSTIMAX 360 GigaSPEED® X10D 91 Series U/UTP Cables

features and benefits

- Cable Diameter - 0.285 in. (7.24 mm)
- Optimized Material Technology (OMT) platform reduces cable diameter while optimizing transmission performance
- Electrical performance guaranteed to meet or exceed the channel specifications of Amendment 1 to ISO/IEC 1180:2001 Class E_A, and ANSI/TIA 568-C.2 Category 6A up to 500 MHz when used as part of a GigaSPEED X10D U/UTP Channel in registered SYSTIMAX installations
- 4-pair construction with finned inner jacket surface and isolator member provides the extra margin of performance required for high-bandwidth applications
- ETL Listed - 1091B Riser rated CMR and CMG - 2091B Plenum rated CMP
- IEC Certified - 3091B is a LSZH cable tested to IEC 60332-3, IEC 61034, and IEC 60754-2
- 1091B and 2091B are ETL Verified Cat 6A
- Can support network line speeds up to 10 gigabits per second
- Qualifies for the SYSTIMAX 20-Year Extended Product Warranty and Applications Assurance when included as part of a registered SYSTIMAX GigaSPEED X10D channel
- Improves density by 54% compared to the industry standard - 6.3 cables per square inch with a 40% fill ratio versus only 4.1 cables in standard size
- Smaller cord improves usable density on interconnects and cross connects - Packaging materials reduced without compromising package durability
- RoHS compliant



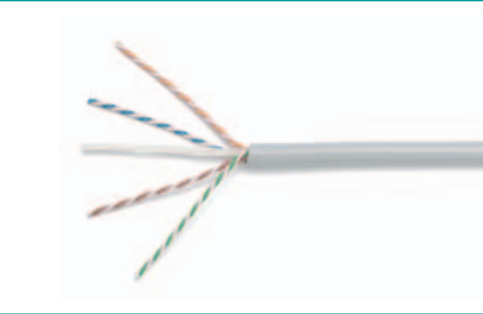
SYSTIMAX 360 GigaSPEED® X10D 1091B Series Cable

SPECIFICATIONS

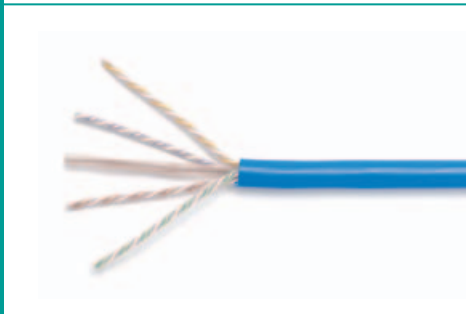
	1091B	2091B	3091B
Nominal Outer Jacket OD	0.285 in. (7.24 mm)	0.285 in. (7.24 mm)	0.285 in. (7.24 mm)
Nominal Outer Jacket Thickness	0.05 in. (1.27 mm)	0.05 in. (1.27 mm)	0.05 in. (1.27 mm)
Maximum Pulling Tension	25 lbs (11.3 kg)	25 lbs (11.3 kg)	25 lbs (11.3 kg)
Nominal Cable Weight	37.30 lbs/kft (16.9 kg)	40.70 lbs/kft (18.5 kg)	36.90 lbs/kft (16.7 kg)
Operating Temperature	-4°F to 140°F (-20°C to 60°C)	-4°F to 140°F (-20°C to 60°C)	-4°F to 140°F (-20°C to 60°C)
Installation Temperature	32°F to 140°F (0°C to 60°C)	32°F to 140°F (0°C to 60°C)	32°F to 140°F (0°C to 60°C)
Conductor Diameter	23 AWG	23 AWG	23 AWG
Jacket Material	PVC	Low Smoke PVC	Low Smoke Zero Halogen
ETL Type	CMR, CMG	CMP	
IEC Verified			IEC 60332-3-22
Nominal Velocity of Propagation	65%	67%	65%
Maximum DC Resistance	8.00 Ohms/100 m	8.00 Ohms/100 m	8.00 Ohms/100 m
Maximum DC Resistance Unbalanced	4%	4%	4%
Maximum Mutual Capacitance at 1 KHz	6.0 nF/100 m	6.0 nF/100 m	6.0 nF/100 m
Minimum Dielectric Strength	1500 VAC or 2500 VDC	1500 VAC or 2500 VDC	1500 VAC or 2500 VDC
Voltage Safety Rating	300 Volts per NEC 800.179	300 Volts per NEC 800.179	300 Volts per NEC 800.179

ORDERING INFORMATION:

Material ID	Product Number	Description
Non Plenum 1091B		
760105114	1091B SL 4/23 R1000	GigaSPEED X10D 1091B Category 6A U/UTP Cable, slate jacket, 4 pair count, 1000 ft (305 m) length, reel
760107078	1091B SL 4/23 W1000	GigaSPEED X10D 1091B Category 6A U/UTP Cable, slate jacket, 4 pair count, 1000 ft (305 m) length, We Tote Box
760105858	1091B SL 4/23 R3000	GigaSPEED X10D 1091B Category 6A U/UTP Cable, slate jacket, 4 pair count, 3000 ft (914 m) length, reel
760105742	1091B BK 4/23 R1000	GigaSPEED X10D 1091B Category 6A U/UTP Cable, black jacket, 4 pair count, 1000 ft (305 m) length, reel
760107086	1091B BK 4/23 W1000	GigaSPEED X10D 1091B Category 6A U/UTP Cable, black jacket, 4 pair count, 1000 ft (305 m) length, We Tote Box
760105759	1091B BL 4/23 R1000	GigaSPEED X10D 1091B Category 6A U/UTP Cable, blue jacket, 4 pair count, 1000 ft (305 m) length, reel
760107094	1091B BL 4/23 W1000	GigaSPEED X10D 1091B Category 6A U/UTP Cable, blue jacket, 4 pair count, 1000 ft (305 m) length, We Tote Box
760105833	1091B BL 4/23 R3000	GigaSPEED X10D 1091B Category 6A U/UTP Cable, blue jacket, 4 pair count, 3000 ft (914 m) length, reel
760105767	1091B LB 4/23 R1000	GigaSPEED X10D 1091B Category 6A U/UTP Cable, light blue jacket, 4 pair count, 1000 ft (305 m) length, reel
760107102	1091B LB 4/23 W1000	GigaSPEED X10D 1091B Category 6A U/UTP Cable, light blue jacket, 4 pair count, 1000 ft (305 m) length, We Tote Box
760105775	1091B GR 4/23 R1000	GigaSPEED X10D 1091B Category 6A U/UTP Cable, green jacket, 4 pair count, 1000 ft (305 m) length, reel
760107110	1091B GR 4/23 W1000	GigaSPEED X10D 1091B Category 6A U/UTP Cable, green jacket, 4 pair count, 1000 ft (305 m) length, We Tote Box
760105783	1091B OR 4/23 R1000	GigaSPEED X10D 1091B Category 6A U/UTP Cable, orange jacket, 4 pair count, 1000 ft (305 m) length, reel
760107128	1091B OR 4/23 W1000	GigaSPEED X10D 1091B Category 6A U/UTP Cable, orange jacket, 4 pair count, 1000 ft (305 m) length, We Tote Box
760105791	1091B RD 4/23 R1000	GigaSPEED X10D 1091B Category 6A U/UTP Cable, red jacket, 4 pair count, 1000 ft (305 m) length, reel
760107136	1091B RD 4/23 W1000	GigaSPEED X10D 1091B Category 6A U/UTP Cable, red jacket, 4 pair count, 1000 ft (305 m) length, We Tote Box
760105817	1091B WH 4/23 R1000	GigaSPEED X10D 1091B Category 6A U/UTP Cable, white jacket, 4 pair count, 1000 ft (305 m) length, reel
760107144	1091B WH 4/23 W1000	GigaSPEED X10D 1091B Category 6A U/UTP Cable, white jacket, 4 pair count, 1000 ft (305 m) length, We Tote Box
760105841	1091B WH 4/23 R3000	GigaSPEED X10D 1091B Category 6A U/UTP Cable, white jacket, 4 pair count, 3000 ft (914 m) length, reel
760105825	1091B YL 4/23 R1000	GigaSPEED X10D 1091B Category 6A U/UTP Cable, yellow jacket, 4 pair count, 1000 ft (305 m) length, reel
760107151	1091B YL 4/23 W1000	GigaSPEED X10D 1091B Category 6A U/UTP Cable, yellow jacket, 4 pair count, 1000 ft (305 m) length, We Tote Box



SYSTIMAX 360 GigaSPEED®
X10D 1091B Series Cable



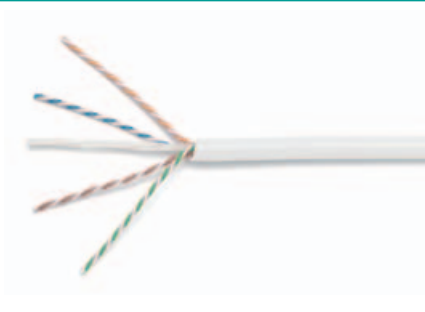
SYSTIMAX 360 GigaSPEED®
X10D 2091B Series Cable

ORDERING INFORMATION:

Material ID	Product Number	Description
Plenum 2091B		
760105338	2091B BL 4/23 R1000	GigaSPEED X10D 2091B Category 6A U/UTP Cable, blue jacket, 4 pair count, 1000 ft (305 m) length, reel
760107201	2091B BL 4/23 W1000	GigaSPEED X10D 2091B Category 6A U/UTP Cable, blue jacket, 4 pair count, 1000 ft (305 m) length, We Tote Box
760105965	2091B BL 4/23 R3000	GigaSPEED X10D 2091B Category 6A U/UTP Cable, blue jacket, 4 pair count, 3000 ft (914 m) length, reel
760105890	2091B GR 4/23 R1000	GigaSPEED X10D 2091B Category 6A U/UTP Cable, green jacket, 4 pair count, 1000 ft (305 m) length, reel
760107219	2091B GR 4/23 W1000	GigaSPEED X10D 2091B Category 6A U/UTP Cable, green jacket, 4 pair count, 1000 ft (305 m) length, We Tote Box
760105908	2091B OR 4/23 R1000	GigaSPEED X10D 2091B Category 6A U/UTP Cable, orange jacket, 4 pair count, 1000 ft (305 m) length, reel
760107227	2091B OR 4/23 W1000	GigaSPEED X10D 2091B Category 6A U/UTP Cable, orange jacket, 4 pair count, 1000 ft (305 m) length, We Tote Box
760105924	2091B RD 4/23 R1000	GigaSPEED X10D 2091B Category 6A U/UTP Cable, red jacket, 4 pair count, 1000 ft (305 m) length, reel
760107243	2091B RD 4/23 W1000	GigaSPEED X10D 2091B Category 6A U/UTP Cable, red jacket, 4 pair count, 1000 ft (305 m) length, We Tote Box
760105932	2091B SL 4/23 R1000	GigaSPEED X10D 2091B Category 6A U/UTP Cable, slate jacket, 4 pair count, 1000 ft (305 m) length, reel
760107250	2091B SL 4/23 W1000	GigaSPEED X10D 2091B Category 6A U/UTP Cable, slate jacket, 4 pair count, 1000 ft (305 m) length, We Tote Box
760105981	2091B SL 4/23 R3000	GigaSPEED X10D 2091B Category 6A U/UTP Cable, slate jacket, 4 pair count, 3000 ft (914 m) length, reel
760105940	2091B WH 4/23 R1000	GigaSPEED X10D 2091B Category 6A U/UTP Cable, white jacket, 4 pair count, 1000 ft (305 m) length, reel
760107268	2091B WH 4/23 W1000	GigaSPEED X10D 2091B Category 6A U/UTP Cable, white jacket, 4 pair count, 1000 ft (305 m) length, We Tote Box
760105973	2091B WH 4/23 R3000	GigaSPEED X10D 2091B Category 6A U/UTP Cable, white jacket, 4 pair count, 3000 ft (914 m) length, reel
760105957	2091B YL 4/23 R1000	GigaSPEED X10D 2091B Category 6A U/UTP Cable, yellow jacket, 4 pair count, 1000 ft (305 m) length, reel
760107276	2091B YL 4/23 W1000	GigaSPEED X10D 2091B Category 6A U/UTP Cable, yellow jacket, 4 pair count, 1000 ft (305 m) length, We Tote Box

ORDERING INFORMATION:

Material ID	Product Number	Description
LSZH 3091B		
760105122	3091B WH 4/23 R1000	GigaSPEED X10D 3091B Category 6A U/UTP Cable, white jacket, 4 pair count, 1000 ft (305 m) length, reel
760107318	3091B WH 4/23 W1000	GigaSPEED X10D 3091B Category 6A U/UTP Cable, white jacket, 4 pair count, 1000 ft (305 m) length, We Tote Box
760106054	3091B WH 4/23 R3000	GigaSPEED X10D 3091B Category 6A U/UTP Cable, white jacket, 4 pair count, 3000 ft (914 m) length, reel
760106039	3091B BL 4/23 R1000	GigaSPEED X10D 3091B Category 6A U/UTP Cable, blue jacket, 4 pair count, 1000 ft (305 m) length, reel
760107326	3091B BL 4/23 W1000	GigaSPEED X10D 3091B Category 6A U/UTP Cable, blue jacket, 4 pair count, 1000 ft (305 m) length, We Tote Box
760106062	3091B BL 4/23 R3000	GigaSPEED X10D 3091B Category 6A U/UTP Cable, blue jacket, 4 pair count, 3000 ft (914 m) length, reel
760106047	3091B SL 4/23 R1000	GigaSPEED X10D 3091B Category 6A U/UTP Cable, slate jacket, 4 pair count, 1000 ft (305 m) length, reel
760107334	3091B SL 4/23 W1000	GigaSPEED X10D 3091B Category 6A U/UTP Cable, slate jacket, 4 pair count, 1000 ft (305 m) length, We Tote Box
760106070	3091B SL 4/23 R3000	GigaSPEED X10D 3091B Category 6A U/UTP Cable, slate jacket, 4 pair count, 3000 ft (914 m) length, reel



SYSTIMAX 360 GigaSPEED® X10D 3091B Series Cable

SYSTIMAX 360™ GigaSPEED® XL 1100GS3 and GigaSPEED X10D 1100GS5 Panels

features and benefits

- Easy cable routing and bundling through improved rear cable management
- Supports deployment of InstaPATCH® Cu pre-terminated copper solutions
- Available in 24 port (1U) and 48 port (2U) options
- Features the elegant SYSTIMAX 360 design
- Available in iPatch-Ready versions (field upgradable to iPatch without the need to remove patch cords, meaning no network downtime) or factory assembled iPatch versions



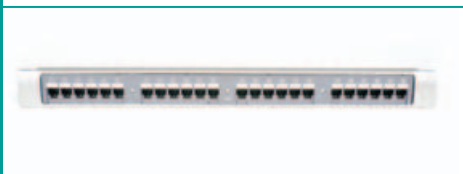
SYSTIMAX 360 1100GS3 24 Port, Front View



SYSTIMAX 360 1100GS3 24 Port, Rear View



SYSTIMAX 360 1100GS3 48 Port



SYSTIMAX 360 iPatch 1100GS3 24 Port

SPECIFICATIONS

	24 Port (1U)	48 Port (2U)
Height	1.75 in (4.45 cm)	3.5 in (8.89 cm)
Width	19 in (48.26 cm)	19 in (48.26 cm)
Depth (including cable management)	7.2 in (18.29 cm)	7.2 in (18.29 cm)
Flammability Rating	UL rated 94 V-0	UL rated 94 V-0
Operating Temperature	14°F to 140°F (-10°C to 60°C)	14°F to 140°F (-10°C to 60°C)
Storage Temperature	-40°F to 158°F (-40°C to 70°C)	-40°F to 158°F (-40°C to 70°C)
Humidity	95% (non-condensing)	95% (non-condensing)

ORDERING INFORMATION:

Material ID	Product Number	Description	iPatch Ready	iPatch
760093419	360-1100-GS3-24	360 1100GS3 24-Port Patch Panel	X	
760093427	360-1100-GS3-48	360 1100GS3 48-Port Patch Panel	X	
760104984	360-iP-1100-GS3-24	360 iPatch 1100GS3 24-Port Panel		X
760105007	360-iP-1100-GS3-48	360 iPatch 1100GS3 48-Port Panel		X
760108894	360-1100-GS5-24	360 1100GS5 24-Port Patch Panel	X	
760108902	360-1100-GS5-48	360 1100GS5 48-Port Patch Panel	X	

Note: iPatch-Ready panels are upgradable to iPatch with the addition of the iPatch Upgrade Kits (360-iP-UP-KIT-1100)

Material ID	Product Number	Description
760101576	360-1100-GS3-DM	360 1100GS3 Distribution Module
760108910	360-1100-GS5-DM	360 1100GS5 Distribution Module
760106161	360-1100-LABEL	360 1100 Label Kit
760101931	360-1100-BEZEL-1U	360 1100 Bezel Kit - 1U
760101949	360-1100-BEZEL-2U	360 1100 Bezel Kit - 2U
760103689	360-1100-GS3-1U	360 1100GS3 1U Panel Kit (Empty)
760103697	360-1100-GS3-2U	360 1100GS3 2U Panel Kit (Empty)
760109017	360-1100-GS5-1U	360 1100GS5 1U Panel Kit (Empty)
760109009	360-1100-GS5-2U	360 1100GS5 2U Panel Kit (Empty)
760104398	360-RCM-BM	360 Rear Cable Management (Bar Mountable)
760104737	360-RCM-RM	360 Rear Cable Management (Rack Mountable)
760104992	360-iP-UP-KIT-1100-24	360 iPatch Upgrade Kit for 360 1100 24 Port Panel
760105015	360-iP-UP-KIT-1100-48	360 iPatch Upgrade Kit for the 360 1100 48 Port Panel

SYSTIMAX 360™ GigaSPEED® XL PATCHMAX® GS3 and GigaSPEED® X10D PATCHMAX® GS5 Panels

features and benefits

- Improved rear cable manager makes cable routing and bundling easier
- Supports deployment of InstaPATCH Cu pre-terminated copper
- Available in 24 port (2U) configuration
- Features elegant SYSTIMAX 360 design
- Innovative 2-way mounting and terminating improving installation for limited rear access applications
- Distribution modules can be snapped onto front of panel for easy front access to rear 110 type IDC termination field
- Designed for simplified administration with built-in cord retainer fingers
- Allows all 24 cords to be routed in the same direction
- 1 to 24 port labeling and identification
- Meets 606 labeling standard

SPECIFICATIONS

Height	3.5 in (8.89 cm)
Width	19 in (48.26 cm)
Depth (front)	4 in (10.16 cm)

ORDERING INFORMATION:

Material ID	Product Number	Description
760102244	360-PM-GS3-2U	360 PATCHMAX GS3 24 Port Patch Panel
760102269	360-PM-GS3-DM	360 PATCHMAX GS3 Distribution Module
760111385	360-PM-GS5-2U	360 PATCHMAX GS5 24 Port Patch Panel
760111393	360-PM-GS5-DM	360 PATCHMAX GS5 Distribution Module
760108993	360-PM-KIT-2U	360 PATCHMAX Panel Kit - 2U



SYSTIMAX 360 GigaSPEED XL PATCHMAX GS3, Front View



SYSTIMAX 360 GigaSPEED XL PATCHMAX GS3, Rear View



SYSTIMAX 360 GigaSPEED XL PATCHMAX GS3 Distribution Module

SYSTIMAX 360 Modular Panel

features and benefits

- Eliminates the need for separate tie wrap components and offers facilitated installation and panel back dressing through simplified cable bundling
- Available in a 24 port (1U) configuration
- Features the elegant SYSTIMAX 360 design
- Supports the deployment of InstaPATCH® Cu pre-terminated copper solutions

SPECIFICATIONS

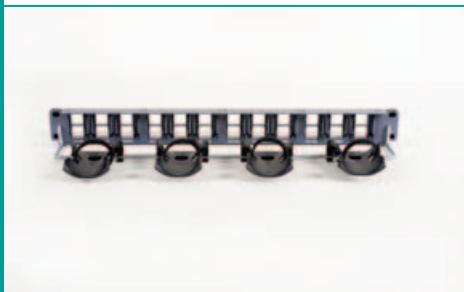
Overall Height	1.75 in. (4.45 cm)
Overall Width	19 in. (48.26 cm)
Depth (including cable management)	7.2 in. (18.29 cm)
Flammability Rating	UL rated 94 V-0
Operating Temperature	14°F to 140°F (-10°C to 60°C)
Storage Temperature	-40°F to 158°F (-40°C to 70°C)
Humidity	95% (non-condensing)

ORDERING INFORMATION:

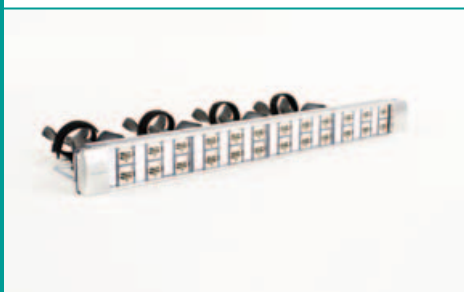
Material ID	Product Number	Description
760104273	360-MOD-1U-24	360 Modular 24-Port Patch Panel
760104463	360-MOD-1U-BEZEL	360 Modular Panel Bezel Kit
760104281	360-MOD-1U-LABEL	360 Modular Panel Label Kit
760109728	360-MOD-1U-LABEL-A4	360 Modular Panel Label Kit A4



SYSTIMAX 360 Modular Panel, front view



SYSTIMAX 360 Modular Panel, rear view



SYSTIMAX 360 Modular Panel with MGS600 Information Outlets

SYSTIMAX 360 GigaSPEED® X10D MGS600 Information Outlet features and benefits

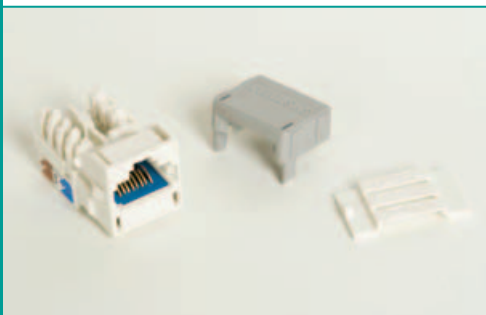
- Electrical performance guaranteed to meet or exceed the channel specifications of Amendment 1 to ISO/IEC 11801: 2002 Class E_A and ANSI/TIA-568-C.2 Category 6A when used as part of a GigaSPEED X10D UTP Channel in registered SYSTIMAX installations
- Patented crossing of straddling pair contacts enables efficient alien crosstalk reduction in the channel
- Snaps into standard CommScope M-Series faceplates, surface-mount boxes, consolidation point boxes and SYSTIMAX Modular Panels. Can also be mounted either at 90 degrees (straight) or 45 degrees (angled) in any SYSTIMAX faceplate
- Universal design and label supports both T568 A & B wiring
- IDC connector terminations on rear of base allow quick and easy installation of 22 to 24 AWG cable
- Optional Plastic Icons (M61A) and Dust Covers (M20A) available in several colors
- Optimal performance is achieved when using the GigaSPEED X10D 360GS10E patch cords; however, the MGS600 is fully backwards compatible
- UL® listed
- Can support network line speeds up to at least 10 gigabits per second
- Qualifies for the SYSTIMAX 20-Year Extended Product Warranty and Applications Assurance when included as part of a registered SYSTIMAX GigaSPEED X10D channel

ORDERING INFORMATION:

Material ID	Product Number	Description
760092361	MGS600 -003 BLACK	360 GigaSPEED® X10D MGS600 Information Outlet, black
760092379	MGS600 -112 ORANGE	360 GigaSPEED® X10D MGS600 Information Outlet, orange
760092387	MGS600 -123 YELLOW	360 GigaSPEED® X10D MGS600 Information Outlet, yellow
760092403	MGS600 -226 GREEN	360 GigaSPEED® X10D MGS600 Information Outlet, green
760092411	MGS600 -246 IVORY	360 GigaSPEED® X10D MGS600 Information Outlet, ivory
760092429	MGS600 -262 WHITE	360 GigaSPEED® X10D MGS600 Information Outlet, white
760092437	MGS600 -270 GRAY	360 GigaSPEED® X10D MGS600 Information Outlet, gray
760092445	MGS600 -317 RED	360 GigaSPEED® X10D MGS600 Information Outlet, red
760092452	MGS600 -318 BLUE	360 GigaSPEED® X10D MGS600 Information Outlet, blue
760092460	MGS600 -361 VIOLET	360 GigaSPEED® X10D MGS600 Information Outlet, violet
760092478	MGS600 -148 ALMOND	360 GigaSPEED® X10D MGS600 Information Outlet, almond
760110957	MGS600-BULK-003	360 GigaSPEED® X10D MGS600 Information Outlet, Black, 100 Pack
760110965	MGS600-BULK-246	360 GigaSPEED® X10D MGS600 Information Outlet, Ivory, 100 Pack
760110973	MGS600-BULK-262	360 GigaSPEED® X10D MGS600 Information Outlet, White, 100 Pack
760110981	MGS600-BULK-318	360 GigaSPEED® X10D MGS600 Information Outlet, Blue, 100 Pack



SYSTIMAX 360 GigaSPEED X10D MGS600



SYSTIMAX 360 GigaSPEED X10D MGS600 with Icon



SYSTIMAX 360 GigaSPEED X10D MGS600 - Side View



SYSTIMAX 360 GigaSPEED X10D GS10E Patch Cord



SYSTIMAX VisiPatch 360 to VisiPatch 360 X10D 4 Pair Solid Patch Cord

SYSTIMAX 360 GigaSPEED® X10D GS10E Patch Cord

features and benefits

- Electrical performance guaranteed to meet or exceed the channel specifications of Amendment 1 to ISO/IEC 11801:2002 Class E_A and ANSI/TIA-568-C.2 Category 6A up to 500 MHz when used as part of a GigaSPEED X10D UTP Channel in registered SYSTIMAX installations
- Can support network line speeds up to at least 10 gigabits per second
- Certified component of an integrated GigaSPEED X10D Solution
- Qualifies for the SYSTIMAX 20-Year Extended Product Warranty and Applications Assurance when included as part of a registered SYSTIMAX GigaSPEED X10D channel
- UL® listed

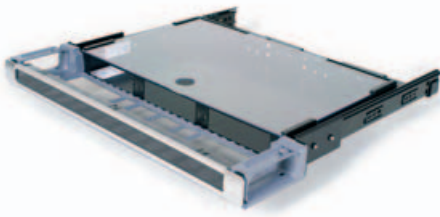
ORDERING INFORMATION:

Material ID	Product Number	Description
CPCSSX2	360GS10E	360GS10E Solid Cordage
CPCSSX3	360GS10E-X3	360GS10E 10/100BASE-T 2X3 & 1X4 Crossover Solid Cordage
CPCS4X2	360GS10E117	360GS10E Single End Solid Cordage
CPCSUX2	360GS10E-MGS600	360GS10E-MGS600 on 1095 Solid Cordage
CPCUUM2	MGS600-MGS600	360 MGS600 to MGS600 on 1091 Cable
CPCUUO2	MGS600-MGS600-P	360 MGS600 to MGS600 on 2091 Plenum Cable
CPCUW2	MGS600-MGS600-L	360 MGS600 to MGS600 on 3091 LSZH Cable
CPCFFX2	VP360T-VP360T-P8X10D	VisiPatch® 360 to VisiPatch® 360 X10D 4-pair Solid Cord T
CPCFFXD	VP360T-VP360T-P8X10D-XD	VisiPatch® 360 to VisiPatch® 360 X10D 4-pair Solid Cord Crossover T
CPCFSX2	VP360T-360GS10E	VisiPatch® 360 to 360GS10E X10D 4-pair Solid Hybrid Cord T

SYSTIMAX 360 G2 1U and 2U Shelves

features and benefits

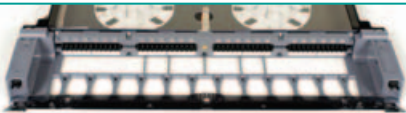
- Bend limiters maximize space by integrating into the shelf trough
- Push/push-style latch on the front trough door improves access to shelf interior
- Unique open-floor trough design enhances access for patch cord latching and de-latching
- Displays intuitively-placed port labeling when door is open
- Features the elegant SYSTIMAX 360 design
- Offered in fixed and sliding options
- Available in 1RU and 2RU sizes
- 360G2 1U Modular Shelf is available in iPatch-Ready versions (field upgradable to iPatch without the need to remove patch cords, meaning no network downtime) or factory assembled iPatch versions



SYSTIMAX 360G2 1U Fiber Shelf



SYSTIMAX 360G2 2U Fiber Shelf with InstaPATCH Plus Adapter Panels



SYSTIMAX 360 iPatch G2 Fiber Shelf

SPECIFICATIONS

	1U	2U
Overall Height	1.75 in. (4.45 cm)	3.5 in. (8.90 cm)
Overall Width (including mounting brackets)	19 in. (48.26 cm)	19 in. (48.26 cm)
Overall Shelf Depth (includes trough)	Sliding - 14.5 in. (36.83 cm) Fixed - 18.5 in. (47 cm)	Sliding - 14.5 in. (36.83 cm) Fixed - 18.5 in. (47 cm)
Tray Depth	10 in. (25.4 cm)	10 in. (25.4 cm)
Weight	Sliding - 9.0 lb (4.1 kg) Fixed - 7.2 lb (3.3 kg)	Sliding - 12.0 lb (5.4 kg) Fixed - 10.2 lb (4.2 kg)
OSP Cable Capacity	Sliding - up to 9 Fixed - up to 17	Sliding - up to 22 Fixed - up to 28

360G2 MODULAR SHELF CAPACITY

Application	Connection Type	1U Modular Shelf	2U Modular Shelf
Termination Only	LC SC ST	48 24 24	96 48 48
Termination + Fusion Splicing (Organizer type used)	LC SC ST	Up to 48 (RoloSplice) Up to 24 (RoloSplice) Up to 24 (RoloSplice)	Up to 96 (RoloSplice) Up to 48 (RoloSplice) Up to 48 (RoloSplice)
Termination + Mechanical Splicing (Organizer type used)	LC SC ST	Up to 48 (RoloSplice) Up to 24 (RoloSplice) Up to 24 (RoloSplice)	Up to 96 (RoloSplice) Up to 48 (RoloSplice) Up to 48 (RoloSplice)

360G2 PANEL SHELF CAPACITY

Application	Connection Type	1U IP Shelf	2U IP Shelf
Termination Only	LC SC ST	72 36 36	144 72 72
Termination + Fusion Splicing (Organizer type used)	LC SC ST	Up to 72 (RoloSplice) Up to 36 (RoloSplice) Up to 36 (RoloSplice)	Up to 128 (RoloSplice) Up to 72 (RoloSplice) Up to 72 (RoloSplice)
Termination + Mechanical Splicing (Organizer type used)	LC SC ST	Up to 72 (RoloSplice) Up to 36 (RoloSplice) Up to 36 (RoloSplice)	Up to 96 (RoloSplice) Up to 72 (RoloSplice) Up to 72 (RoloSplice)

Notes: MOD Shelves accept G2 Modules/Bezels or 360G2 Modules/Bezels.

IP Shelves accept InstaPATCH Modules or 1000-type panels.

UP shelves are configurable with separately purchased faceplates - port values shown are maximum currently available.

ORDERING INFORMATION:

Material ID	Product Number	Description	iPatch Ready	iPatch
760103150	360G2-1U-MOD-FX	360G2 1U Fixed Modular Cassette Shelf, accepts 4 MOD cassettes	X	
760103085	360G2-1U-MOD-SD	360G2 1U Sliding Modular Cassette Shelf, accepts 4 MOD cassettes	X	
760105163	360-iP-G2-1U-LC-FX	360 iPatch G2 LC Fiber Shelf, Fixed		X
760105171	360-iP-G2-1U-LC-SD	360 iPatch G2 LC Fiber Shelf, Slide		X
760103200	360G2-1U-IP-FX	360G2 1U Fixed Panel Shelf, accepts 3 adapter panels		
760103192	360G2-1U-IP-SD	360G2 1U Sliding Panel Shelf, accepts 3 adapter panels		
760103176	360G2-1U-UP-FX	360G2 1U Fixed Faceplate Shelf		
760103184	360G2-1U-UP-SD	360G2 1U Sliding Faceplate Shelf		
760103218	360G2-2U-IP-FX	360G2 2U Fixed Panel Shelf, accepts 6 adapter panels		
760103226	360G2-2U-IP-SD	360G2 2U Sliding Panel Shelf, accepts 6 adapter panels		
760103168	360G2-2U-MOD-FX	360G2 2U Fixed Modular Cassette Shelf, accepts 8 MOD cassettes		
760103143	360G2-2U-MOD-SD	360G2 2U Sliding Modular Cassette Shelf, accepts 8 MOD cassettes		
760086215	360G2-1U-TROUGH	360 1U Trough Assembly Kit		
760093567	360G2-2U-TROUGH	360 2U Trough Assembly Kit		
760105148	360-iP-UP-KIT-G2-LC	360 iPatch Upgrade Kit for 360G2-1U-MOD Shelves with LC cassettes		

Note: iPatch-Ready shelves with LC modules are upgradable to iPatch with the addition of the iPatch Upgrade Kits (360-iP-UP-KIT-G2-LC)

SYSTIMAX 360 G2 4U Shelf

features and benefits

- Bend limiters maximize space by integrating into the shelf trough
- Push/push-style latch on front and rear door improves access to shelf interior
- Refined cable management rings enhance access to base of modules
- Advanced vertical management increases flexibility
- Larger side fiber access allows for more fiber
- Shelf assist (patent pending) facilitates installation and ensures proper U spacing for shelf mounting
- Features the elegant SYSTIMAX 360 design

SPECIFICATIONS

	4U
Overall Height	7 in. (17.78 cm)
Overall Width (including mounting brackets)	19 in. (48.26 cm)
Overall Shelf Depth (includes trough)	Sliding - 15.5 in. (39.37 cm) Fixed - 15.5 in. (39.37 cm)
Internal Front Shelf Depth	4 in. (10.16 cm)
Weight	Sliding - 11 lb (4.98 kg) Fixed - 11 lb (4.98 kg)
OSP Cable Capacity	Sliding - up to 288 Fixed - up to 288

360G2 4U MODULAR SHELF CAPACITY

Application	Connection Type	4U MOD Shelf Shelf
Termination Only	LC SC ST	144 72 72
Termination + Fusion Splicing (Organizer type used)	LC SC ST	Up to 144 (Splice Wallet)/128 (RoloSplice) Up to 72 (Splice Wallet)/72 (RoloSplice) Up to 72 (Splice Wallet)/72 (RoloSplice)
Termination + Mechanical Splicing (Organizer type used)	LC SC ST	Up to 144 (Splice Wallet)/ 96 (RoloSplice) Up to 72 (Splice Wallet)/ 72 (RoloSplice) Up to 72 (Splice Wallet)/ 72 (RoloSplice)

360G2 4U PANEL SHELF CAPACITY

Application	Connection Type	4U IP Shelf Shelf
Termination Only	LC SC ST	288 144 144
Termination + Fusion Splicing (Organizer type used)	LC SC ST	Up to 192 (Splice Wallet)/128 (RoloSplice) Up to 144 (Splice Wallet)/128 (RoloSplice) Up to 144 (Splice Wallet)/128 (RoloSplice)
Termination + Mechanical Splicing (Organizer type used)	LC SC ST	Up to 144 (Splice Wallet)/ 96 (RoloSplice) Up to 144 (Splice Wallet)/ 96 (RoloSplice) Up to 144 (Splice Wallet)/ 96 (RoloSplice)

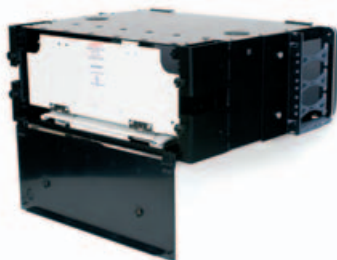
Note:
 MOD Shelves accept G2 Modules/Bezels or 360G2 Modules/Bezels.
 IP Shelves accept InstaPATCH Modules or 1000-type panels.
 UP shelves are configurable with separately purchased faceplates - port values shown are maximum currently available.

ORDERING INFORMATION:

Material ID	Product Number	Description
760101063	360G2-4U-IP-FX	360G2 4U Fixed Panel Shelf, accepts 12 adapter panels
760101089	360G2-4U-IP-SD	360G2 4U Sliding Panel Shelf, accepts 12 adapter panels
760101055	360G2-4U-MOD-FX	360G2 4U Fixed Modular Cassette Shelf, accepts 12 MOD cassettes
760101071	360G2-4U-MOD-SD	360G2 4U Sliding Modular Cassette Shelf, accepts 12 MOD cassettes
760098459	360G2-XCPB	360 Expanded Cable Protector Kit for 4U Shelf
760101410	360G2-4U-FLK	360 Flip Label Kit, 4U Shelf



SYSTIMAX 360G2 4U Fiber Shelf



SYSTIMAX 360G2 4U Fiber Shelf, Rear View

SYSTIMAX 360 G2 Fiber Cartridges and Bezels

features and benefits

- iPatch Ready for adding intelligent to network system in the future
- LC Bezels, Cartridges, and Cartridges with Pigtailed are iPatch Ready
- 360G2 Cartridges and Bezels are reverse compatible with current 1000G2 and 600G2 Shelves
- Factory Terminated Fiber Pigtailed
- 6 and 12 Fiber configurations for Pigtailed Cartridges
- Supports easy configurations for moves adds and changes
- No special Fiber Patch Cords Required for the iPatch Ready Field Upgrade
- No fiber disconnects to install iPatch Ready Field Upgrade

ORDERING INFORMATION:

Material ID	Product Number	Description
Bezel		
760109363	360G2 Bezel 12-LC-LS-AQ	360G2 Bezel 12 LC LazrSPEED Aqua iPatch compatible
760109371	360G2 Bezel 12-LC-MM-BG	360G2 Bezel 12 LC OptiSPEED Beige iPatch compatible
760109389	360G2 Bezel 12-LC-SM-BL	360G2 Bezel 12 LC TeraSPEED Blue iPatch compatible
760109751	360G2 Bezel 12-LCA-SM-GR	360G2 Bezel 12 LCA TeraSPEED Green iPatch compatible
760109454	360G2 Bezel 4 x M-Series Openings	360G2 Bezel 4 M Series Openings for Copper
760109397	360G2 Bezel 6-SC-LS-AQ	360G2 Bezel 6 SC LazrSPEED Aqua
760109405	360G2 Bezel 6-SC-MM-BG	360G2 Bezel 6 SC OptiSPEED Beige
760109413	360G2 Bezel 6-SC-SM-BL	360G2 Bezel 6 SC TeraSPEED Blue
760109769	360G2 Bezel 6-SCA-SM-GR	360G2 Bezel 6 SCA TeraSPEED Green
760109421	360G2 Bezel 6-ST-LS-AQ	360G2 Bezel 6 ST LazrSPEED Aqua
760109439	360G2 Bezel 6-ST-MM-BG	360G2 Bezel 6 ST OptiSPEED Beige
760109447	360G2 Bezel 6-ST-SM-BL	360G2 Bezel 6 ST TeraSPEED Blue

Note: 360G2 LC Cartridges and Bezels are iPatch compatible when used with the 360G2 1U MOD Shelf

ORDERING INFORMATION:

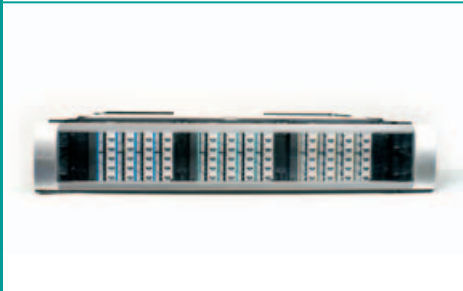
Material ID	Product Number	Description
Cartridge		
760109256	360G2 Cartridge 12-LC-LS-AQ	360G2 Cartridge 12 LC LazrSPEED Aqua iPatch compatible
760109470	360G2 Cartridge 12-LC-LS-AQ-Pigtails	360G2 Cartridge 12 LC LazrSPEED Aqua w/Pigtails iPatch compatible
760109264	360G2 Cartridge 12-LC-MM-BG	360G2 Cartridge 12 LC OptiSPEED Beige iPatch compatible
760109488	360G2 Cartridge 12-LC-MM-BG-Pigtails	360G2 Cartridge 12 LC OptiSPEED Beige w/Pigtails iPatch compatible
760109272	360G2 Cartridge 12-LC-SM-BL	360G2 Cartridge 12 LC TeraSPEED Blue iPatch compatible
760109496	360G2 Cartridge 12-LC-SM-BL-Pigtails	360G2 Cartridge 12 LC TeraSPEED Blue w/Pigtails iPatch compatible
760109280	360G2 Cartridge 12-LCA-SM-GR	360G2 Cartridge 12 LCA TeraSPEED Green iPatch compatible
760109504	360G2 Cartridge 12-LCA-SM-GR-Pigtails	360G2 Cartridge 12 LCA TeraSPEED Green w/Pigtails iPatch compatible
760109595	360G2 Cartridge 4-SC/2-SCA-SM-Pigtails	360G2 Cartridge 4 SC/2 SCA TeraSPEED Blue w/Pigtails
760109298	360G2 Cartridge 6-SC-LS-AQ	360G2 Cartridge 6 SC LazrSPEED Aqua
760109512	360G2 Cartridge 6-SC-LS-AQ-Pigtails A	360G2 Cartridge 6 SC LazrSPEED Aqua w/Pigtails A
760109520	360G2 Cartridge 6-SC-LS-AQ-Pigtails B	360G2 Cartridge 6 SC LazrSPEED Aqua w/Pigtails B
760109306	360G2 Cartridge 6-SC-MM-BG	360G2 Cartridge 6 SC OptiSPEED Beige
760109538	360G2 Cartridge 6-SC-MM-BG-Pigtails A	360G2 Cartridge 6 SC OptiSPEED Beige w/Pigtails A
760109546	360G2 Cartridge 6-SC-MM-BG-Pigtails B	360G2 Cartridge 6 SC OptiSPEED Beige w/Pigtails B
760109314	360G2 Cartridge 6-SC-SM-BL	360G2 Cartridge 6 SC TeraSPEED Blue
760109553	360G2 Cartridge 6-SC-SM-BL-Pigtails A	360G2 Cartridge 6 SC TeraSPEED Blue w/Pigtails A
760109561	360G2 Cartridge 6-SC-SM-BL-Pigtails B	360G2 Cartridge 6 SC TeraSPEED Blue w/Pigtails B
760109322	360G2 Cartridge 6-SCA-SM-GR	360G2 Cartridge 6 SCA TeraSPEED Green
760109579	360G2 Cartridge 6-SCA-SM-GR-Pigtails A	360G2 Cartridge 6 SCA TeraSPEED Green w/Pigtails A
760109587	360G2 Cartridge 6-SCA-SM-GR-Pigtails B	360G2 Cartridge 6 SCA TeraSPEED Green w/Pigtails B
760109330	360G2 Cartridge 6-ST-LS-AQ	360G2 Cartridge 6 ST LazrSPEED Aqua
760109603	360G2 Cartridge 6-ST-LS-AQ-Pigtails A	360G2 Cartridge 6 ST LazrSPEED Aqua w/Pigtails A
760109611	360G2 Cartridge 6-ST-LS-AQ-Pigtails B	360G2 Cartridge 6 ST LazrSPEED Aqua w/Pigtails B
760109348	360G2 Cartridge 6-ST-MM-BG	360G2 Cartridge 6 ST OptiSPEED Beige
760109629	360G2 Cartridge 6-ST-MM-BG-Pigtails A	360G2 Cartridge 6 ST OptiSPEED Beige w/Pigtails A
760109637	360G2 Cartridge 6-ST-MM-BG-Pigtails B	360G2 Cartridge 6 ST OptiSPEED Beige w/Pigtails B
760109355	360G2 Cartridge 6-ST-SM-BL	360G2 Cartridge 6 ST TeraSPEED Blue
760109645	360G2 Cartridge 6-ST-SM-BL-Pigtails A	360G2 Cartridge 6 ST TeraSPEED Blue w/Pigtails A
760109652	360G2 Cartridge 6-ST-SM-BL-Pigtails B	360G2 Cartridge 6 ST TeraSPEED Blue w/Pigtails B
760109462	360G2-MOD-BLANK-4PK	360G2 MOD Panel Blank (4 Panels)

Note: 360G2 LC Cartridges and Bezels are iPatch compatible when used with the 360G2 1U MOD Shelf

SYSTIMAX 360 iPatch® G2 High Density Fiber Shelf

features and benefits

- Accommodates 72 duplex LC ports (144 fibers) in 2U space
- Available empty, with the ability to be populated with 1, 2 or 3 pre-terminated modules from LazrSPEED®, TeraSPEED® or OptiSPEED® Solutions
- Supports Alpha or Beta installations
- Features the elegant SYSTIMAX 360 design



SYSTIMAX 360 iPatch G2 High Density Fiber Shelf, Front View with High Density Modules



SYSTIMAX 360 iPatch G2 High Density Fiber Shelf



SYSTIMAX 360 iPatch G2 High Density LazrSPEED® Module

SPECIFICATIONS

360 iPatch G2 High Density Shelf	
Overall Height	3.625 in. (9.21 cm)
Overall Width	19 in. (48.26 cm)
Overall Depth	19 in. (48.26 cm)
Operating Temperature	23°F to 122°F (-5°C to 50°C), max 75% non-condensing humidity
Storage Temperature	-40°F to 158°F (-40°C to 70°C)
360 iPatch G2 High Density Modules	
Overall Height	3.25 in. (8.26 cm)
Overall Width	6 in. (15.24 cm)
Overall Depth	9 in. (22.86 cm)
Operating Temperature	23°F to 122°F (-5°C to 50°C), max 75% non-condensing humidity
Storage Temperature	-40°F to 158°F (-40°C to 70°C)

ORDERING INFORMATION:

Material ID	Product Number	Description
760093336	360-IP-HD-2U-IP-SD	360 iPatch G2 HD Fiber Shelf, Slide
760093344	360-IP-HD-MOD-LC-LS	360 iPatch G2 HD LS Module
760093351	360-IP-HD-MOD-LC-LS-3	360 iPatch G2 HD LS Module (3-pack)
760093369	360-IP-HD-MOD-LC-TS	360 iPatch G2 HD TS Module
760093377	360-IP-HD-MOD-LC-TS-3	360 iPatch G2 HD TS Module (3-pack)
760093385	360-IP-HD-MOD-LC-OS	360 iPatch G2 HD OS Module
760093393	360-IP-HD-MOD-LC-OS-3	360 iPatch G2 HD OS Module (3-pack)

SYSTIMAX 360 iPatch® Panel Manager

features and benefits

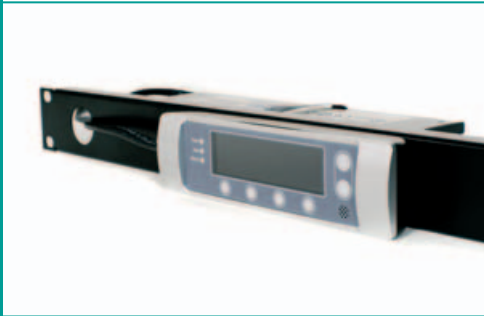
- Innovative, cost effective, space-saving technology and design simplifies deployment in just 1U of space
- Localized languages support includes Danish, English, French, German, Italian, Russian and Spanish
- Accommodates up to 45 panels, depending on specific panel configuration
- Features the elegant SYSTIMAX 360 design

SPECIFICATIONS:

Height	1.7 in. (4.32 cm)
Width	19 in. (48.26 cm)
Depth	6 in. (15.24 cm)
Operating Temperature	14°F to 104°F (-10°C to 40°C), max 75% non-condensing humidity
Storage Temperature	-4°F to 158°F (-20°C to 70°C)
Input Voltage	100V-240V AC
Max input current	.6A
Power Consumption	15W
Power Plugs supported	North America, Japan, Australia, Singapore, United Kingdom, Hong Kong, Europe, South America, Korea, Argentina.
Accessories or hardware included	44-position panel bus, power supply, panel bus jumper cable, 7 in. patch cord, mounting hardware.
Weight	3.4 lbs (1.54 kg)
Display Type	LCD graphics display
Display Size	3.25 in. (8.26 cm) measured diagonally; 240 x 64 pixels
Number of Panel Manager units per Rack Manager LAN	99 Max
Microprocessor	16-bit, 16 MHz 18LF8722 processor

ORDERING INFORMATION:

Material ID	Product Number	Description
760095562	360-iP-PANEL-MGR	360 iPatch Panel Manager



SYSTIMAX 360 iPatch Panel Manager, Front View



SYSTIMAX 360 iPatch Panel Manager, Rear View

SYSTIMAX 360™ iPatch® Network Manager

features and benefits

- Innovative, cost effective, space-saving technology and design simplifies deployment, requiring no more than 1RU of space (easily mounted on the 1U bracket provided with Panel Manager)
- When coupled with a Panel Manager, provides all functionality of Rack Manager Plus
- Utilizes the display of the Panel Manager for configuration, including IP settings
- Supports PING response for use when troubleshooting IP connectivity
- Network Manager is equipped with: Three power ports - Power In (2), Power Out (1), One RJ-45, 10/100Mb Ethernet port, One RJ-45, I2C port, Universal power adapter



SYSTIMAX 360 iPatch Network Manager

SPECIFICATIONS

Dimensions	
Depth	73.66 mm (2.90 in)
Height	25.40 mm (1.00 in)
Weight	0.45 kg (1.00 lb)
Width	160.02 mm (6.30 in)
Environmental Specifications	
Flammability Rating	UL 94 V-0
Operating Temperature	-5°C to +50 °C (+23 °F to +122 °F)
Relative Humidity	Up to 95%, non-condensing
Safety Standard	Austel, CE, cUL
Storage Temperature	-40°C to +80 °C (-40°F to +176 °F)

ORDERING INFORMATION:

Material ID	Product Number	Description
760105353	360-IP-NET-MGR-MOD	360 iPatch Network Manager



© 2009 CommScope, Inc. All rights reserved.

Visit our Web site at www.commscope.com or contact your local CommScope representative or BusinessPartner for more information. All trademarks identified by ® or ™ are registered trademarks or trademarks, respectively, of CommScope.

This document is for planning purposes only and is not intended to modify or supplement any specifications or warranties relating to SYSTIMAX products or services.

09/09 BR-A-7